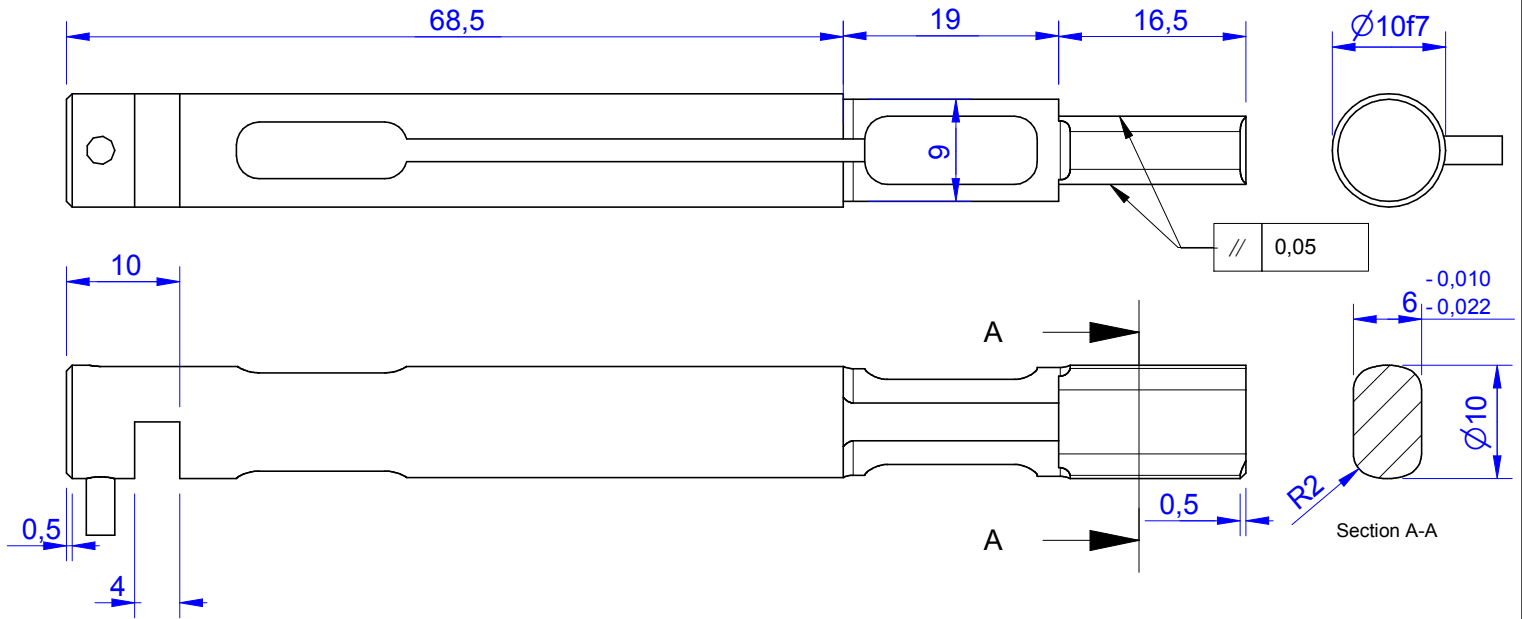


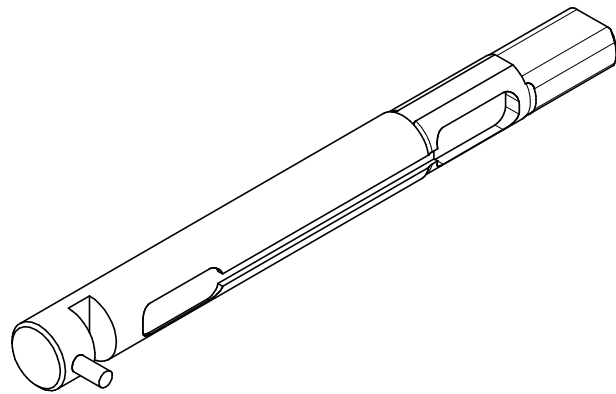
# MB283

single-sided Load Pin



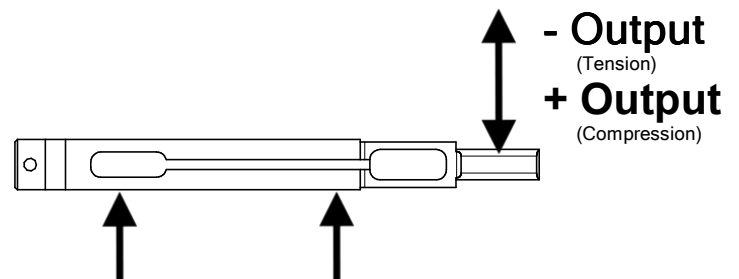
| Order no.    | Capacity (F.S.) | Review |
|--------------|-----------------|--------|
| MB283-200-B* | 200N            | B      |
| MB283-500-B  | 500N            | B      |
| MB283-1000-B | 1000N           | B      |
| MB283-2000-B | 2000N           | B      |

\* above showed version  
The fixed dimensions don't change at the other capacity.



## Specifications: (Customizing on request)

| Dimension / Material   |              |                 |
|------------------------|--------------|-----------------|
| Material               |              | Stainless Steel |
| Protection class       |              | IP 64           |
| <b>Mechanical Data</b> |              |                 |
| Safe Load Limit        | % of F.S.    | 200             |
| Breaking Load          | % of F.S.    | 300             |
| <b>Electrical Data</b> |              |                 |
| Rated Output           | mV/V@F.S.    | 1               |
| Zero Balance           | mV/V         | ±0,05           |
| Excitation (Maximum)   | Volt         | 10              |
| Input Resistance       | Ohm          | 400±50          |
| Output Resistance      | Ohm          | 352±2           |
| Insulating Resistance  | GOhm         | >5              |
| <b>Precision</b>       |              |                 |
| Precisionclass         | %            | 1               |
| Nonlinearity           | % of F.S.    | ± 0,5           |
| Nonrepeatability       | % of F.S.    | ± 0,25          |
| Hysteresis             | % of F.S.    | ± 0,2           |
| Temp. Shift Zero       | % of F.S./K. | ±0,05           |
| Temp. Shift Span       | % of F.S./K. | ±0,05           |
| <b>Temperature</b>     |              |                 |
| Compensated Temp.      | °C           | -10...+60       |
| Operating Temp.        | °C           | -20...+70       |



|                  |                   |                |            |            |
|------------------|-------------------|----------------|------------|------------|
| Wiringcode: WC50 | Cabletype: stc31v |                |            |            |
| Cable Length     | Excitation (+)    | Excitation (-) | Bridge (+) | Bridge (-) |
| 3 m              | red               | black          | green      | white      |

**Batarow**  
Made in Germany

Batarow Sensorik GmbH  
Karow 17  
18276 Lüssow

Mail: info@batarow.com  
Phone: +49 (0) 3843-855555  
Fax : +49 (0) 3843-218842

Internet:  
www.batarow.com

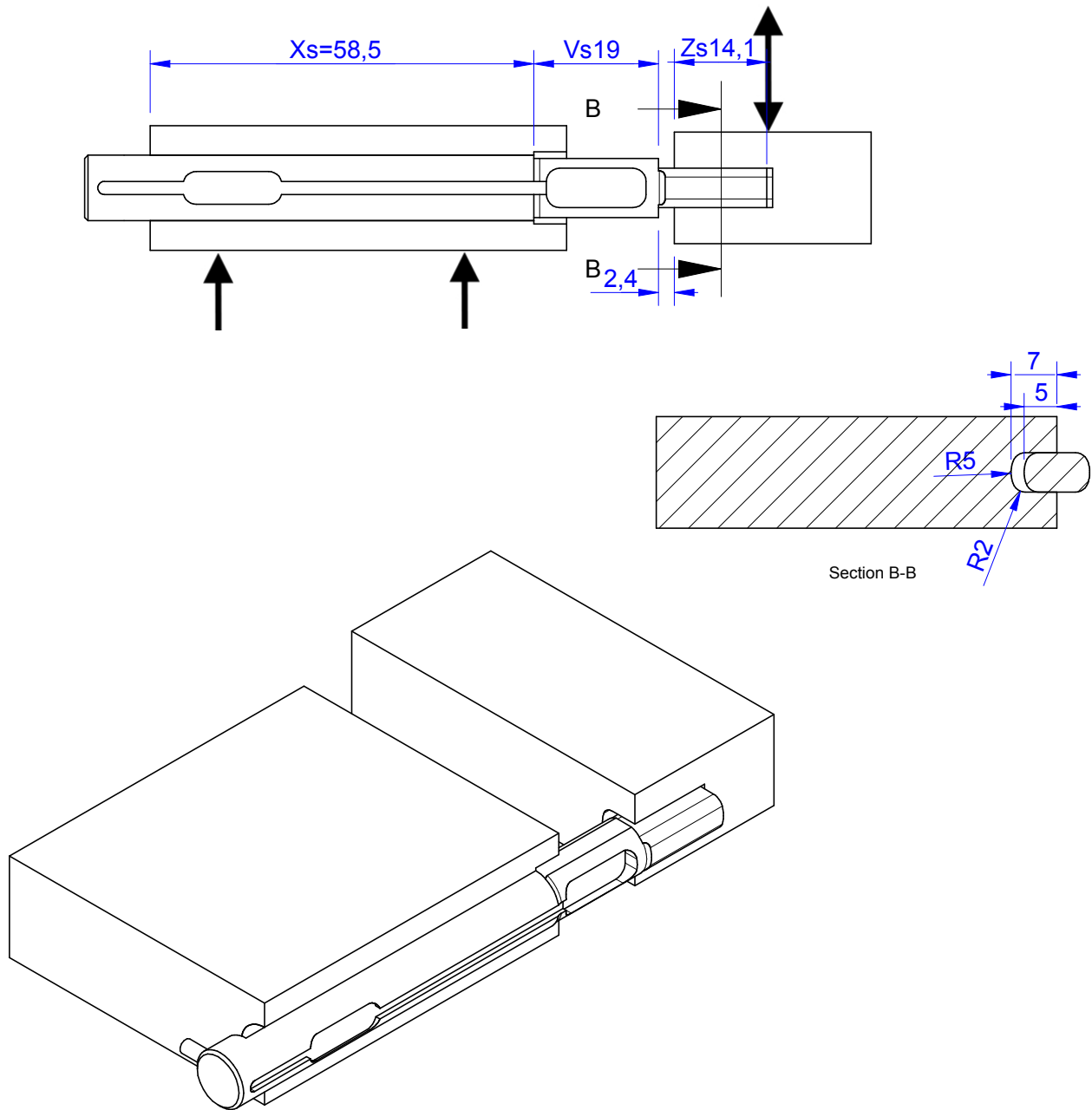
# Mounting Situation

MB283\_rev\_b

## Configuration 1 (Standard)

possible Mounting Situation / Customer Mounting could vary

(Please describe Mounting situation with Vs,Ws,Xs,Ys and Zs for best possible calibration)



**Batarow**  
Made in Germany

Batarow Sensorik GmbH  
Karow 17  
18276 Lüssow

Mail: [info@batarow.com](mailto:info@batarow.com)  
Phone: +49 (0) 3843-855555  
Fax : +49 (0) 3843-218842

Internet:  
[www.batarow.com](http://www.batarow.com)